

A construction site at sunset. A crane is lifting a large, dark, rectangular panel. Scaffolding and other construction elements are visible in the background. A blue arrow-shaped overlay points to the right, containing the title and author information.

Architecture and Allied Disciplines

By Diego Lopez

Class: Introduction to Architecture



Part I: Profession



What is the difference between architecture and interior design?

Architecture

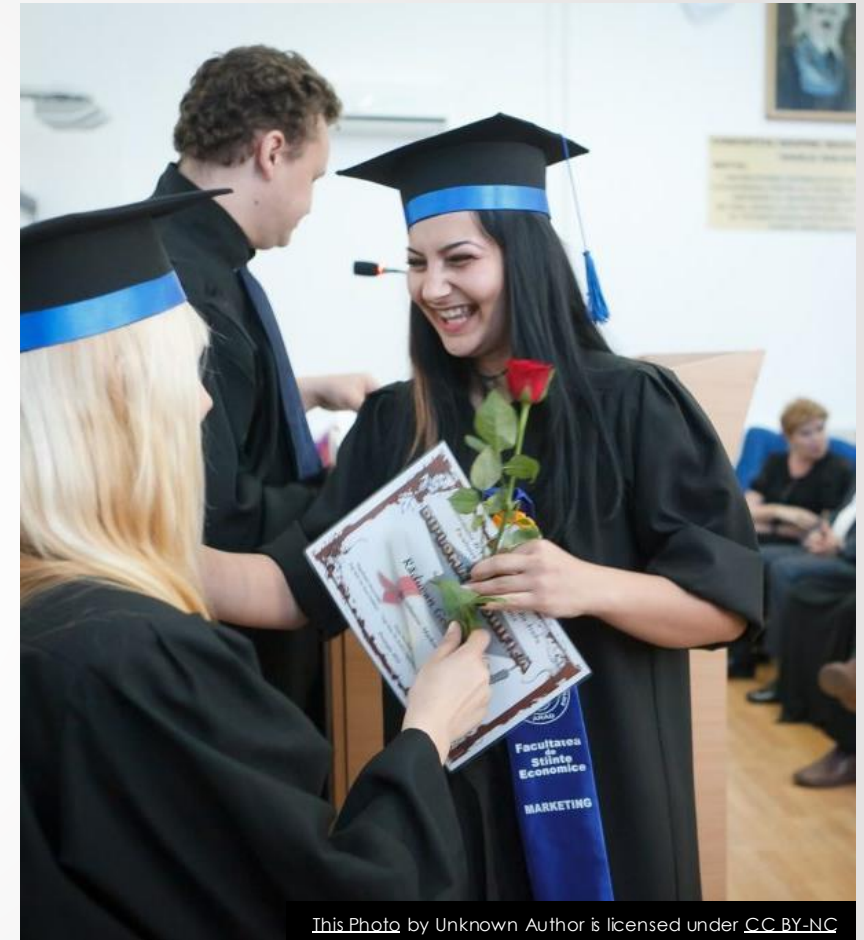
- “Architects begin the design process at the scale of a room and progress up (considering the entire building or even a city district). (*Ching and Eckler 349-372*)”
- “Architects Study longer than Interior Designers...Therefore are qualified to to design both exterior and interior of a space. (*Leeson*)”

Interior Design

- “Interior designers begins at the scale of a room and progress down (considering such intricate details as textiles details as textile patterns and mailbox). (*Ching and Eckler 349-372*)”

What Education is required to become an interior designer?

- ▶ “A masters, associate's or bachelor's degree in Interior design programs. (*The Profession of Interior Designer*)”



This Photo by Unknown Author is licensed under [CC BY-NC](#)

Do the architects and interiors designers collaborate on a project, i.e. work together?



- ▶ “Services that architects and interior designers both perform:
 - ▶ Selection of Interior finishes such as tile and woodwork
 - ▶ Drafting of Interior Elevations and details
 - ▶ Space planning for furniture placement. (Pelletier)”

Who are the different professionals and others with whom an interior designer will work on a project?

- ▶ The interior designer may work with engineers and consultants. They may also work with architects, contractors, subcontractors, and construction managers. (Ching and Eckler 349-372)



What is Landscape Architecture? What education is required to become a landscape architect?



- ▶ “Landscape Architecture involves the planning, design, management, and nurturing of the built and environments. (*WHAT IS LANDSCAPE ARCHITECTURE?*)
- ▶ “A bachelor's or master's degree in landscape architecture is usually necessary for entry into the profession. There are two undergraduate landscape architect degrees: a Bachelor of Landscape Architecture (BLA) and a Bachelor of Science in Landscape Architecture (BSLA). These programs usually require 4 to 5 years of study. (*How to become a Landscape Architect*)”

What is the role of Landscape Architecture in a project?

- ▶ “With their unique skill set, landscape architects work to improve human and environmental health in all communities. (*WHAT IS LANDSCAPE ARCHITECTURE?*)”
- ▶ “Landscape Architects design these areas so that they are not only easy to use but also harmonious with the natural environments. (*Landscape Architects : Occupational Outlook Handbook*)”



This Photo by Unknown Author is licensed under [CC BY-SA](#)



Do the Architects and Landscape Architects collaborate on a project, i.e. work ?

- “Designing and building landscape projects is a collaboration between many team members (landscape architects, contractors, architects, engineers, etc.)... (Damian)”
- When Landscape Architects find a location containing different geographical features, “it helps the architects design different environments by providing clues on where to start planning and how to anticipate future effects of the landscape, such as rainfall running into a valley. (*Landscape Architects : Occupational Outlook Handbook*)”

What is Urban Design?

- ▶ "The aspect of architecture and city planning that deals with design of urban structures and spaces."
(Ching and Eckler 373-407)



This Photo by Unknown Author is licensed under CC BY-NC-ND

How is urban design or city planning related to Architecture?

- ▶ It, “includes collaboration from a larger set of contributing disciplines and schools of thought” which includes Architecture (Ching and Eckler 373-407).



How do architects, landscape architects, and civil engineers collaborate in urban design?

- “Architects design buildings and works with planners and engineer to layout large-scale developments. (Ching and Eckler 373-407)”
- “Landscape architects design open spaces and streetscapes. They also work with architects to define the placement of buildings and with civil engineers to define public infrastructure. (Ching and Eckler 373-407)”
- “Civil engineers plan city infrastructure. They work with urban planners to lay out large-scale land-use strategies and design elements to control water runoff and retention. (Ching and Eckler 373-407)”



How do architecture and fine arts relate to each other?

- ▶ “Both are created using the same organizing principles, the same visual elements, and the same engagement of the senses. (Odenthal)”



How do artists and architects collaborate?

- ▶ “Art needs an appropriate built environment within which it can be showcased to greatest effect, while architecture needs art to turn bricks, steel, and concrete into a space in which people want to live, to learn, to shop and to work. (Dijkema)”



This Photo by Unknown Author is licensed under [CC BY-SA-NC](#)

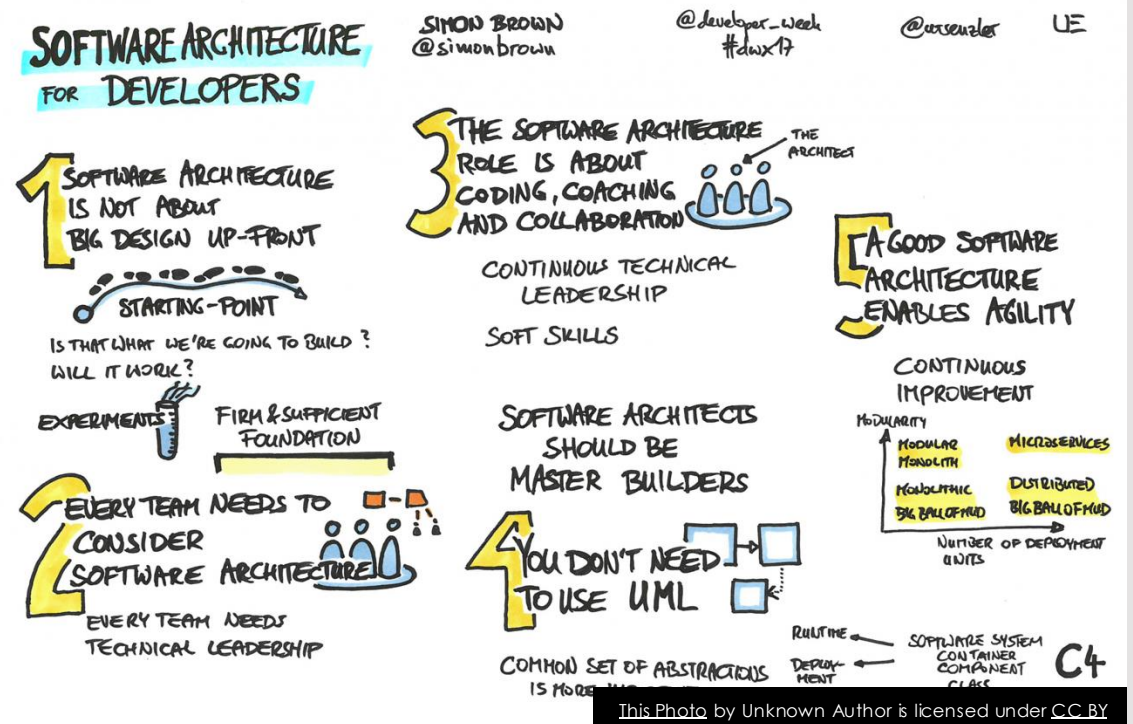
A large blue arrow pointing to the right, which serves as a background for the text.

Part II: Software

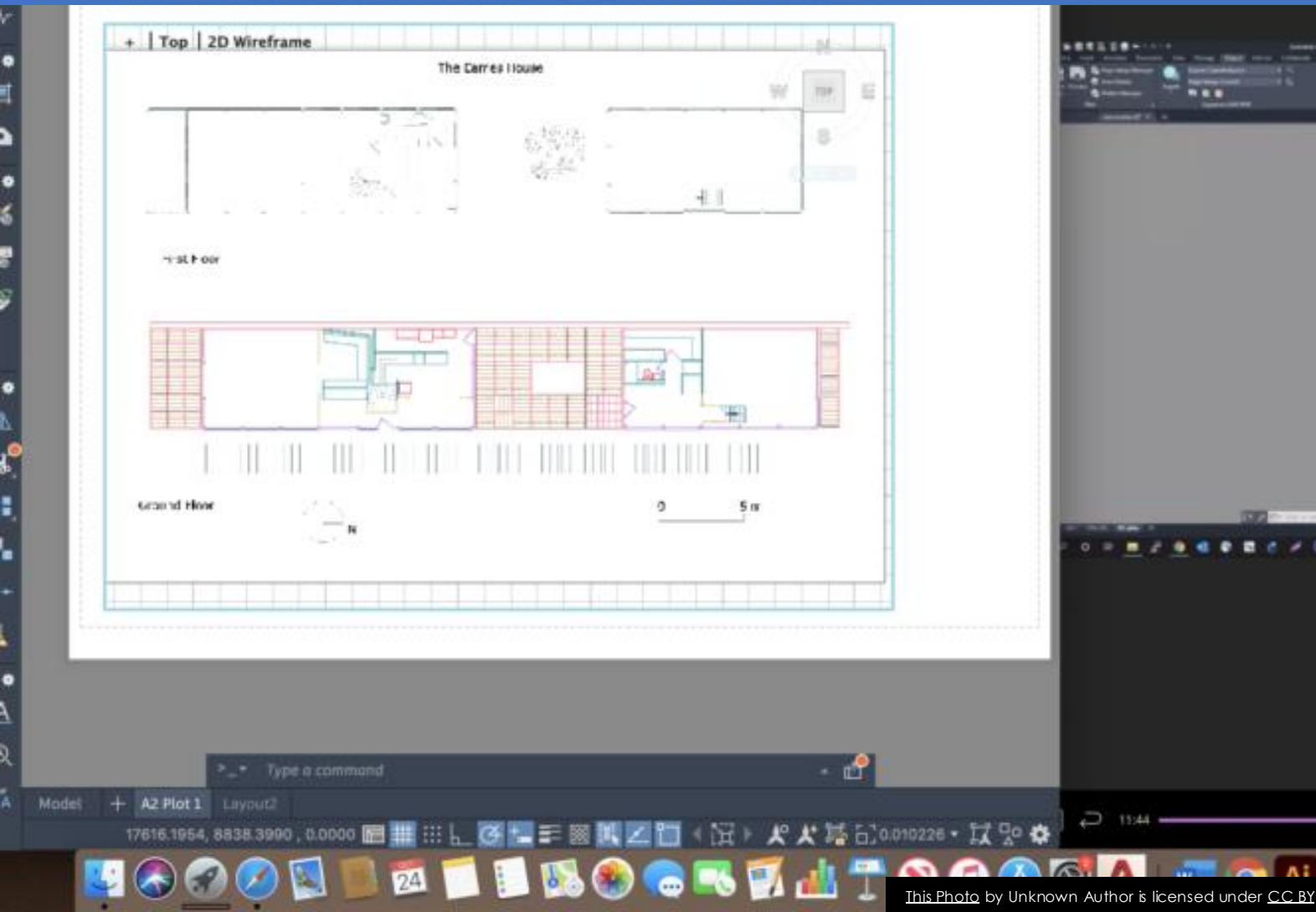
Several thin, light gray curved lines that sweep across the right side of the slide, adding a modern, abstract design element.

What are the main software used in architecture?

- Computer-aided design and drafting (CADD) (Ching and Eckler 349-372)
- Building Information Management (BIM) systems. (Ching and Eckler 349-372)
- Geographical Information Systems (GIS) (Landscape Architects : Occupational Outlook Handbook)



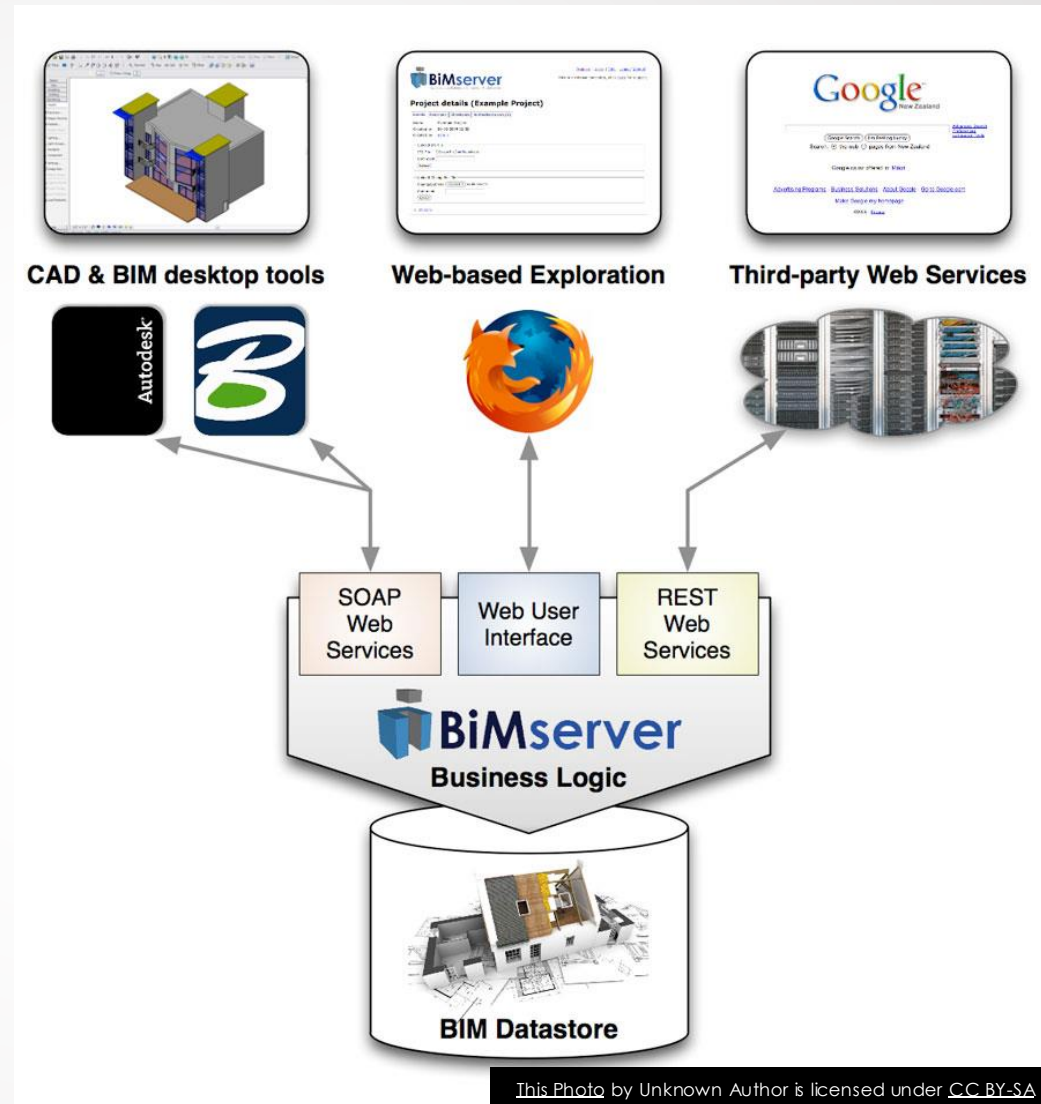
Computer-aided design and drafting (CADD)



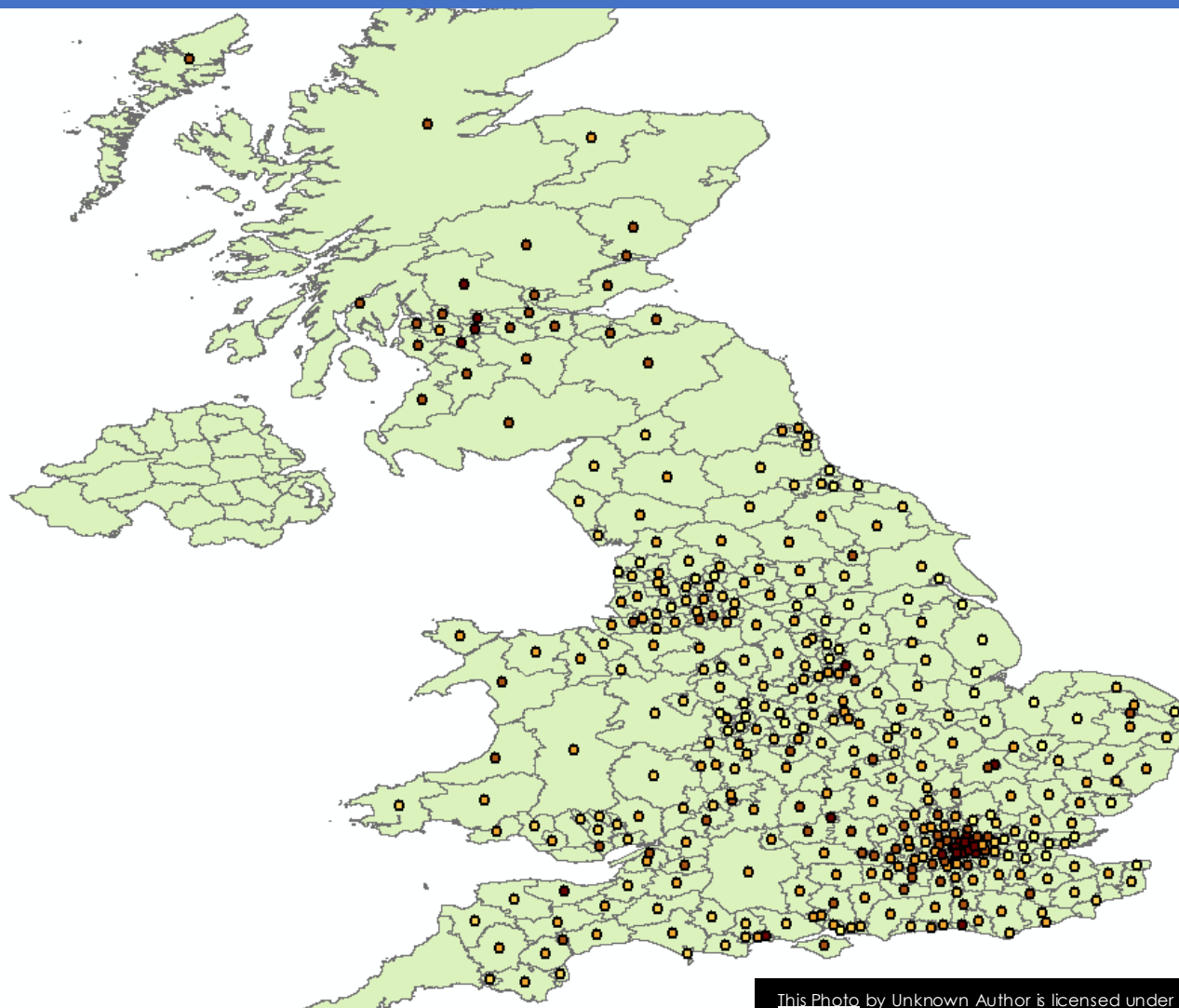
- ▶ Landscape architects use this software to prepare models of their proposed work. (*Landscape Architects : Occupational Outlook Handbook*)
- ▶ This software allows designers to “build interactive three-dimensional models of building. (Ching and Eckler 349-372)”
- ▶ I've have used this software before.

Building Information Management (BIM) Systems

- ▶ This program allows designers "coordinate building systems as they design. (Ching and Eckler 349-372)"



Geographical Information Systems (GIS)



- Geographical Information Systems (GIS) offer GPS Coordinates of Different features. (*Landscape Architects : Occupational Outlook Handbook*)



Resources



- ▶ *ARCHITECTURE VS INTERIOR DESIGNERS*. Dir. Amanda Leeson. Perf. Amanda Leeson. *Youtube*. © 2021 Google LLC, 12 Oct. 2016. Web. 24 Apr. 2021.
- ▶ Ching, Francis D.K., and James F. Eckler. "Allied Disciplines: Interior Design." *Introduction to Architecture*. Hoboken, NJ: Wiley, 2013. 349-72. Print.
- ▶ Ching, Francis D.K., and James F. Eckler. "Allied Disciplines: Urbanism." *Introduction to Architecture*. Hoboken, NJ: Wiley, 2013. 373-407. Print.
- ▶ Dijkema, Jan. "How Art Enhances Architecture." *Chapman Taylor*. © CHAPMAN TAYLOR 2021, 23 Apr. 2021. Web. 24 Apr. 2021.
- ▶ Holmes, Damian. "Collaborating with Landscape Contractors." *World Landscape Architecture*. ©2007-2021 WORLD LANDSCAPE ARCHITECTURE., 28 July 2019. Web. 25 Apr. 2021.
- ▶ "How to Become a Landscape Architect." *U.S. Bureau of Labor Statistics*. U.S. Bureau of Labor Statistics, 09 Apr. 2021. Web. 24 Apr. 2021.
- ▶ N.A. "WHAT IS LANDSCAPE ARCHITECTURE?" *What Is Landscape Architecture?* © 1995-2019 by The American Society of Landscape Architects., n.a. Web. 23 Apr. 2021.
- ▶ Odenthal, Kathleen. "Meaning Behind Art and Architecture." *Owlcation*. © 2021 Maven Media Brands, 15 May 2016. Web. 25 Apr. 2021.
- ▶ Pelletier, Jeff. "Architecture vs. Interior Design." *Board & Vellum*. © Copyright 2011-2021, Board & Vellum., 6 Mar. 2016. Web. 24 Apr. 2021.
- ▶ *The Profession of Interior Designer*. Perf. Allison Lipscomb, Peter Ho, Jamiah D. Payne, and Francine Smith. *Youtube*. © 2021 Google LLC, 1 Mar. 2013. Web. 24 Apr. 2021.
- ▶ US Department of Labor. "Landscape Architects : Occupational Outlook Handbook." *U.S. Bureau of Labor Statistics*. U.S. Bureau of Labor Statistics, 09 Apr. 2021. Web. 24 Apr. 2021. <<https://www.bls.gov/ooh/architecture-and-engineering/landscape-architects.htm#tab-2>>.