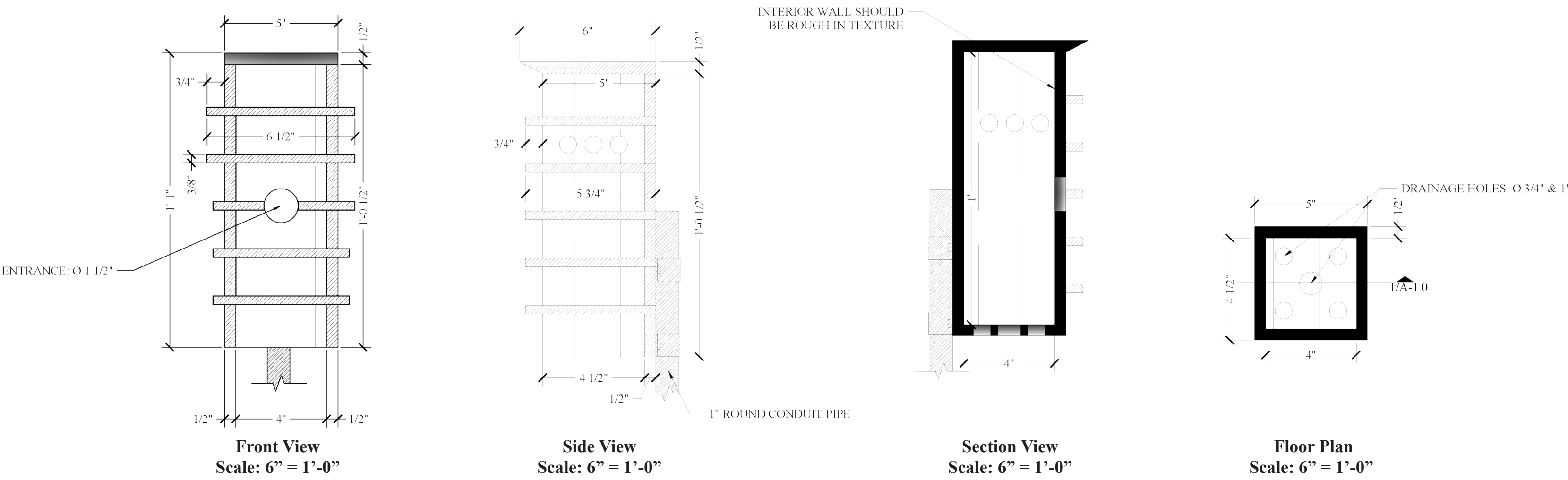
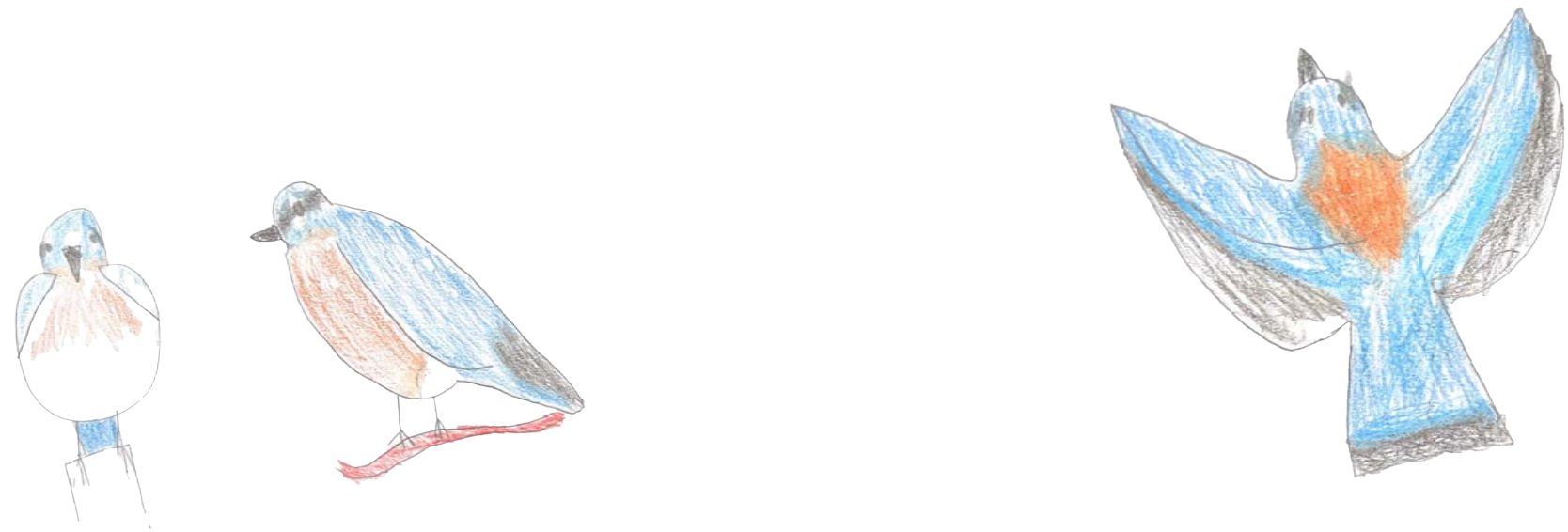


# Birdhouse for an Eastern Bluebird

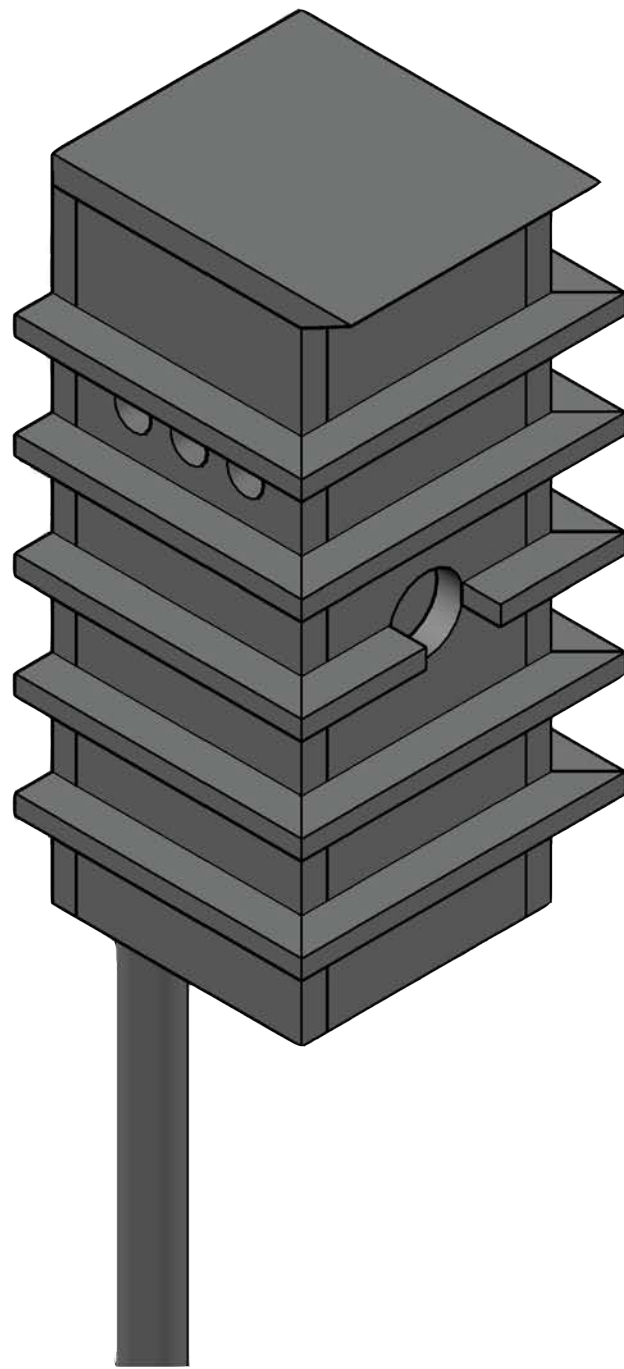
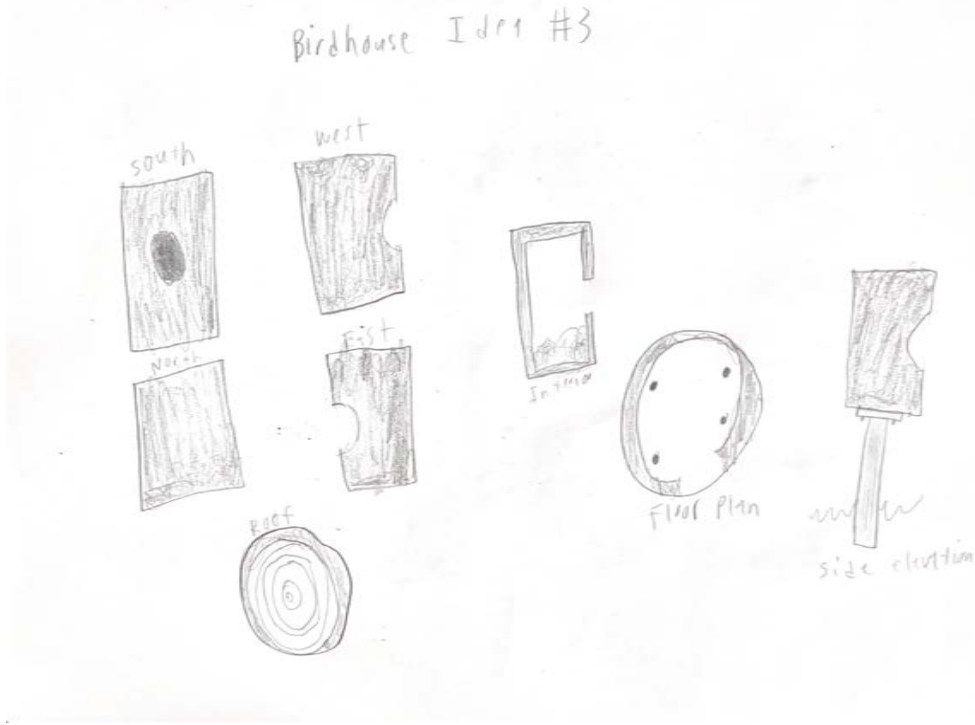
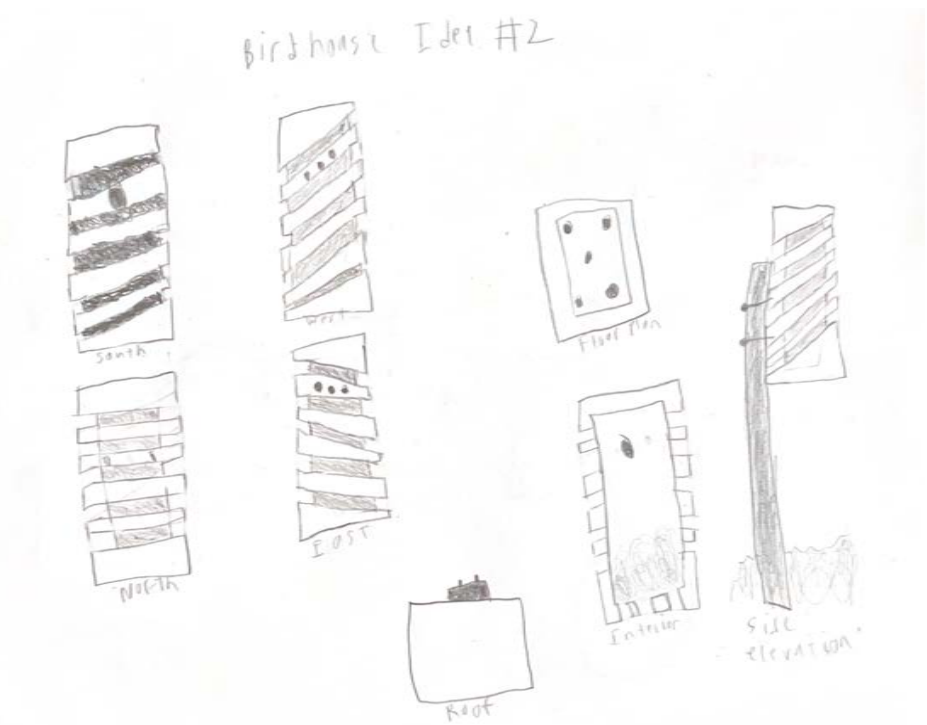
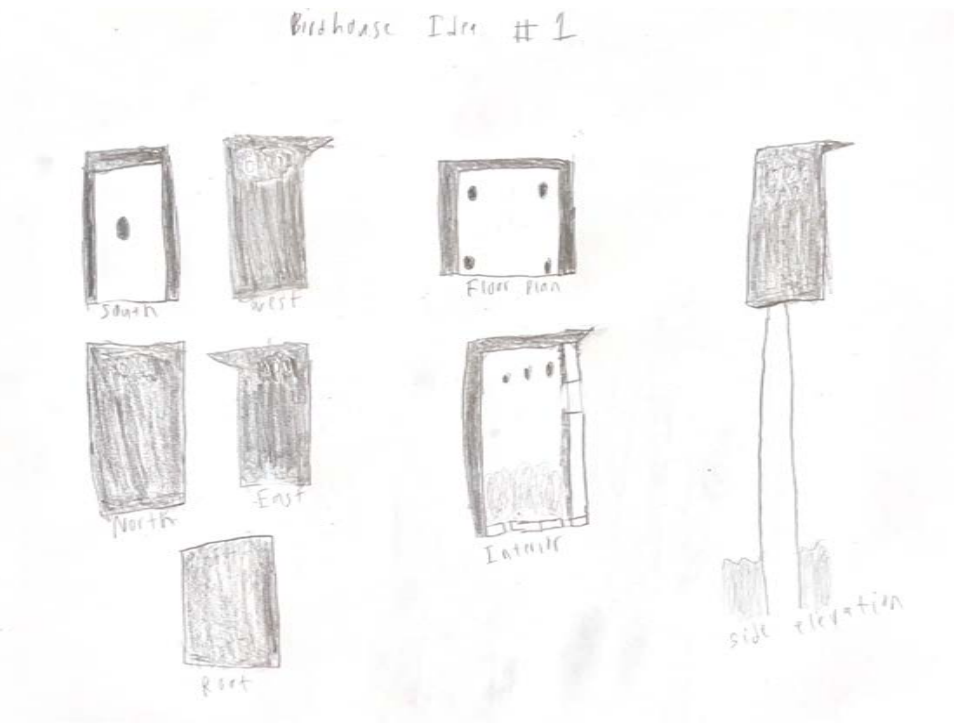
## Description

- The Eastern Bluebird is a species of bird native to North America. It is most commonly found in the eastern part of the United States. It is a small thrush with a big, round head, large eyes, a plump body, and an alert posture. Its bill is short and straight. It is about 6 3/10" to 8 3/10" in length, 1 oz. to 1 8/10 oz. in weight, and has a wingspan of 9 4/5" to 1' - 0 3/5".
- Eastern Bluebirds tend to perch on wires, posts, and low branches in open country, scanning the ground for prey. They feed by dropping to the ground onto insects or, in fall and winter, by sitting atop of fruiting trees to gulp down berries.
- As for its habitat, Eastern Bluebirds live in meadows and openings surrounded by trees that offer suitable nest holes. With the proliferation of nest boxes and bluebirds trails, bluebirds are now a common sight along roads, field edges, golf courses, and other open areas.



## Design Statement

When designing the birdhouse, I wanted to make it look modern, like a new house being renovated to keep up with the current times. I also wanted it to look natural like the woodpecker holes the Eastern Bluebirds prefer to nest in.



Isometric View



Perspective View