

An abstract graphic on the left side of the slide, consisting of white lines and circles on a blue background, resembling a circuit board or a stylized tree structure.

FORM AND SPACE

BY DIEGO LOPEZ

CLASS: INTRO TO
ARCHITECTURE



FORMS DEFINING SPACE



HORIZONTAL ELEMENTS DEFINING SPACE



BASE PLANE



- This field of grass represents a base plane. Like the example shown in the book, the horizontal plane lying in the background makes a flat base.

ELEVATED BASE PLANE

- This butte in a desert, is an elevated base plane due to its tall height and flat surface. It establishes a space between the ground and the base of the butte.



This Photo by Unknown Author is licensed under [CC BY](#)

DEPRESSED BASE PLANE



This Photo by Unknown Author is licensed under [CC BY-NC-ND](#)

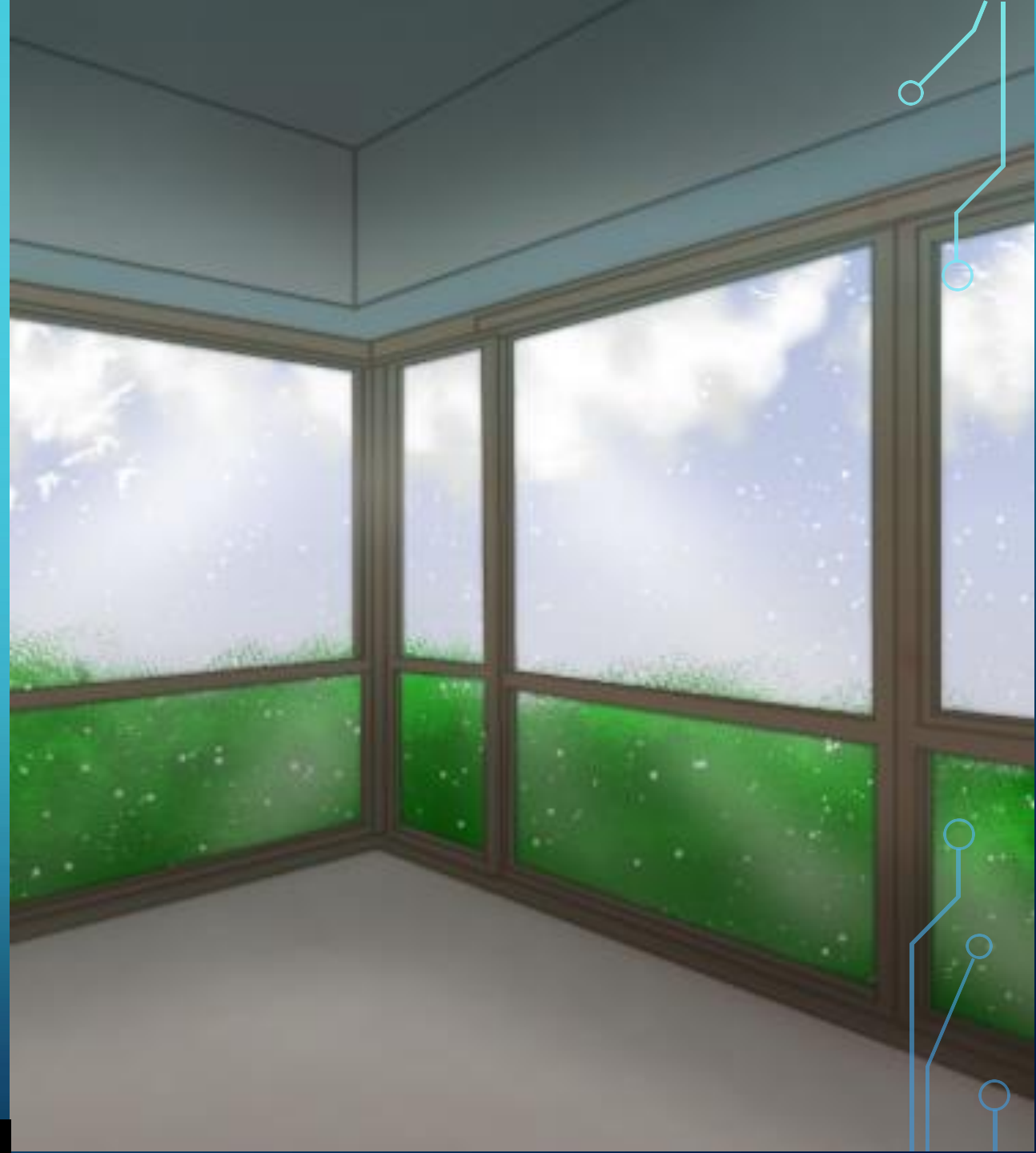
- The Grand Canyon is a brilliant example of a depressed base plane. The ground is depressed to create a lower base and define a volume of space.

OVERHEAD PLANE

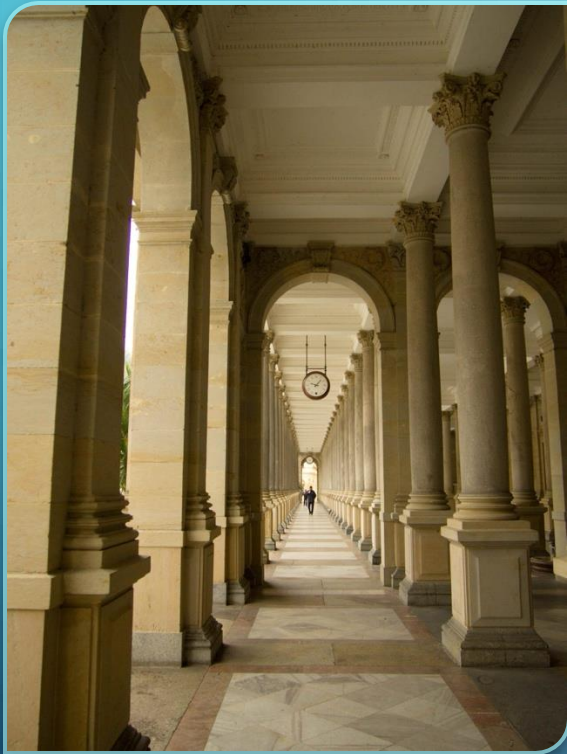
- The tree in the savannah is an example of an overhead plane. The head of the tree covers a lot of ground and that defines a space between the tree and the ground.



VERTICAL ELEMENTS DEFINING SPACE



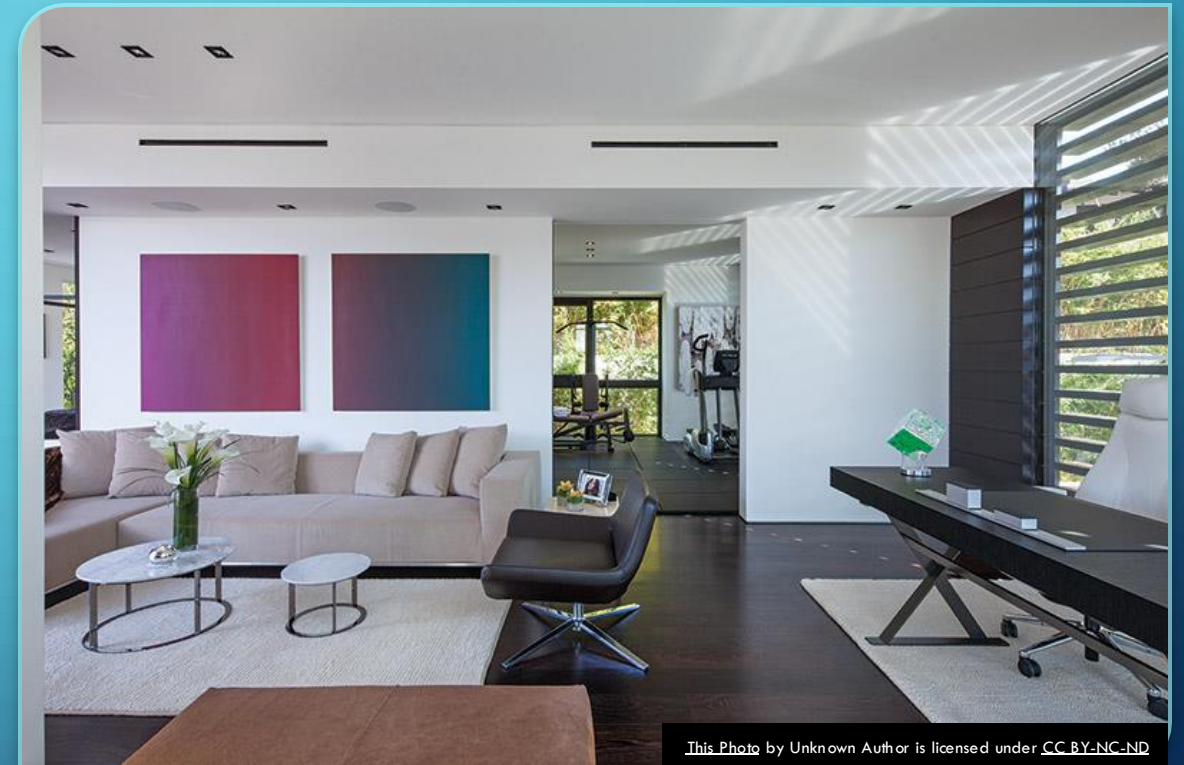
VERTICAL LINEAR ELEMENTS



- The columns in this photo indicate multiple points on the floor of that building. This is an example of vertical linear elements.

SINGLE VERTICAL PLANE

- In this picture, there is a wall (with two paintings) standing in the middle of the room. This wall is acting much like a column, but it is far much wider than a vertical linear element. This makes it a single vertical plane.



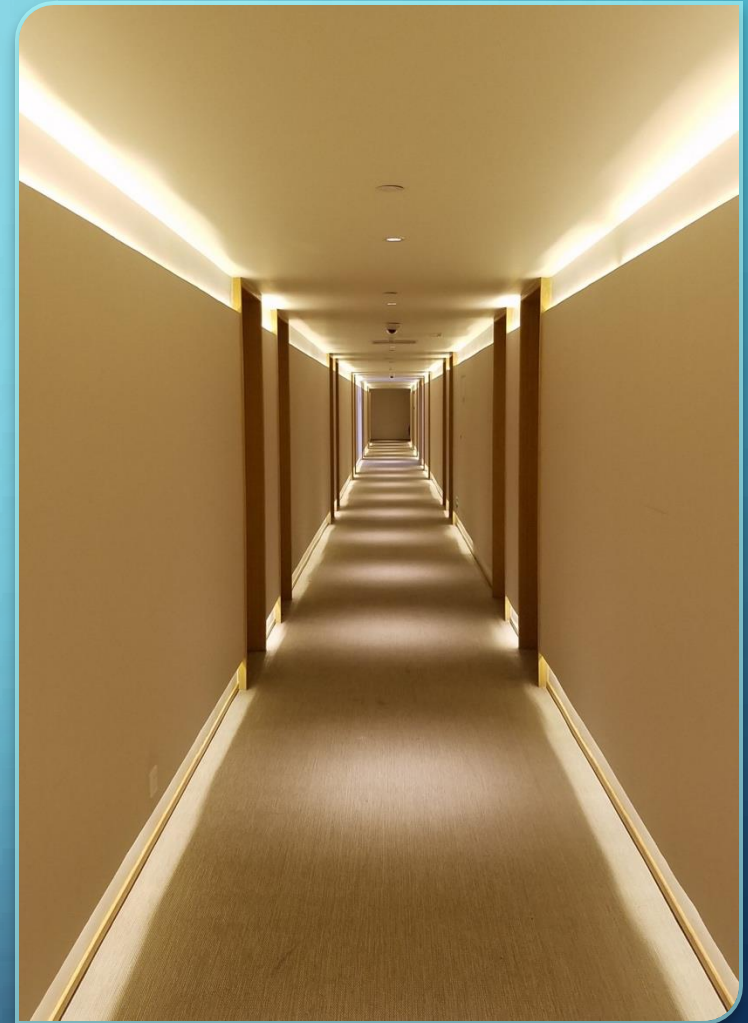
L-SHAPED CONFIGURATION OF PLANES



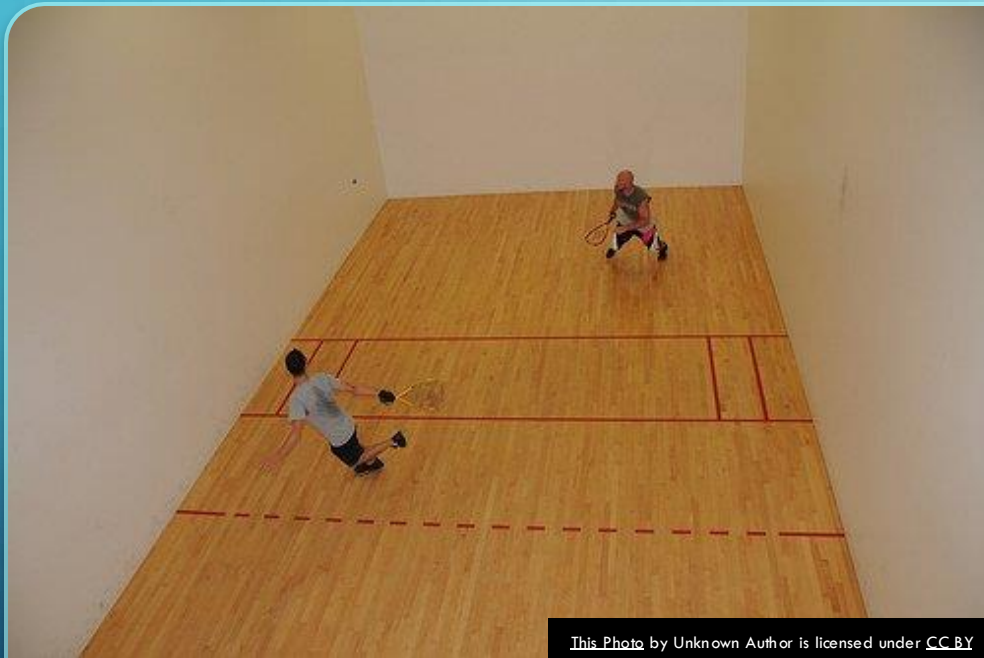
- Even though the bookcase is covering up the corner, there is an L-shaped configuration in this picture. The corner indicates a diagonal going toward the room.

PARALLEL VERTICAL PLANES

- Parallel Vertical Degrees define an amount of space in between two planes. Hallways are excellent examples of these vertical elements.



U-SHAPED PLANES



This Photo by Unknown Author is licensed under [CC BY](#)

- U-shaped planes have an inward focus of space. A racquetball court has u-shaped planes.

FOUR PLANES: CLOSURE

- The courtyard on the right is an example of an enclosed space. All four walls are completely encasing the area.





QUALITIES OF ARCHITECTURAL SPACE

DEGREE OF ENCLOSURE



Renderings are an artist's conception and are intended only as a general reference.
Features, materials, finishes and layout of subject unit may be different than shown.

[This Photo](#) by Unknown Author is licensed under [CC BY-NC-ND](#)

- The college dorm rendering on the right represents a degree of enclosure. There are a few openings on three sides of the room.

LIGHT

- When light hits a surface, its brightness is reflected off nearby surfaces. This skylight in a bathroom is a good example. It brings in natural light.



This Photo by Unknown Author is licensed under CC BY-SA-NC

VIEW



[This Photo](#) by Unknown Author is licensed under [CC BY-NC-ND](#)

- A view is an important quality of architectural space. It adds a bit of focus to a room. The underwater view in this room is the latter's main focus.